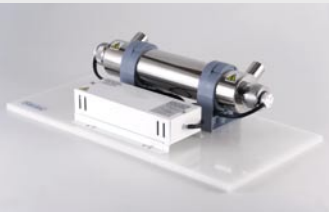


model shown
 UV-DS15 with 3/4" BSP parallel ports



Flow rate	8 lpm
Unit wattage	15 w
Lamps	1 x 15 w
Quartz sleeve	1
Inlet/outlet port size	3/4" BSP
Length	17 1/2" (45cm)
Unit Width	3 1/2" (9cm)
Height	5" (13cm)
Chamber diameter	3 1/2" (9cm)
Shipping weight	5 kg
Casing stainless steel	316
Voltage	220/240 v
Max operating pressure	100 psi

- available on polypropylene backboard
- spray baked electrical control box

Silverline UK Limited
 Whitemoor
 Iddesleigh, Winkleigh
 Devon EX19 8BN

Tel: +44 (0)1805 804202
 enquiries@silverlineuk.co.uk
www.silverlineuk.co.uk

Dimensions are approximate. Specifications may be subject to modification without notice.